



YOUR



**PEGASUS
GRANDE**

your space...

Holidays are all about exploring the wide-open spaces and the Pegasus Grande, with an 8ft wide body, gives you more space all round.

Available in a choice of six dynamic layouts, sleeping up to four or six people, the Pegasus Grande is the perfect range for those who are looking for more space.

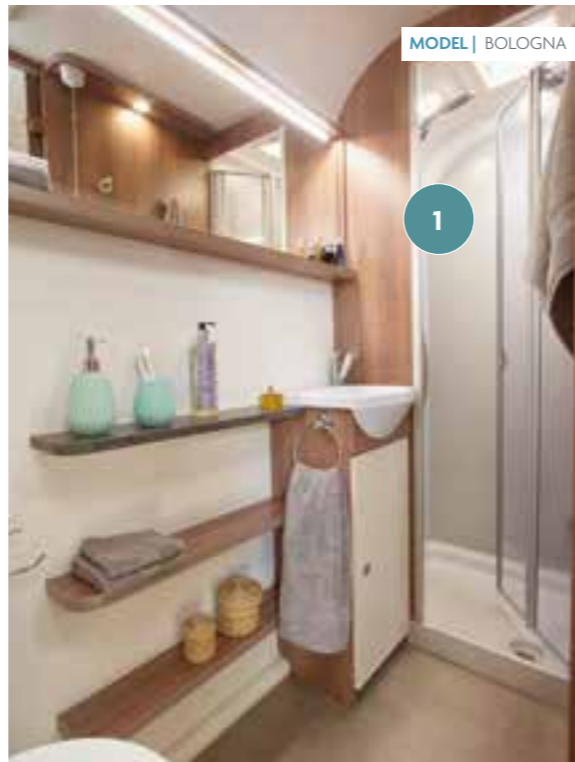
With single and twin axle layouts on offer, the Pegasus Grande is suitable for both touring or seasonal use, enabling you to make the most out of your home from home. These special caravans possess a host of exterior and interior features. The high level of specification will make your home in them as relaxing as possible, as you explore your surroundings.

6 MODELS

4-6 BERTHS

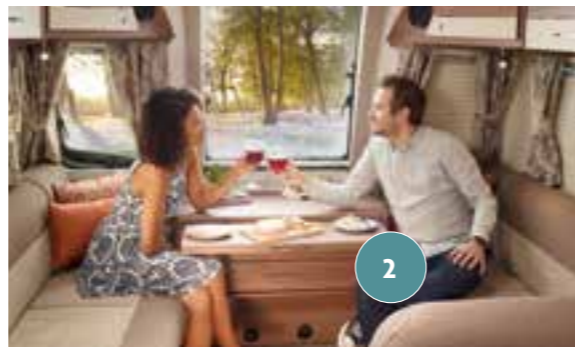


MODEL | TURIN



MODEL | BOLOGNA

1



2

- 1 Large fully lined square shower cubicle with bi-fold door
- 2 Wider 2-drawer chest of drawers with slide out occasional table and soft close drawers (model specific)
- 3 Branded Radio, CD, MP3 player with iPod, MP3 player connection point
- 4 **NEW** G-shaped front lounge with sliding front table (model specific)



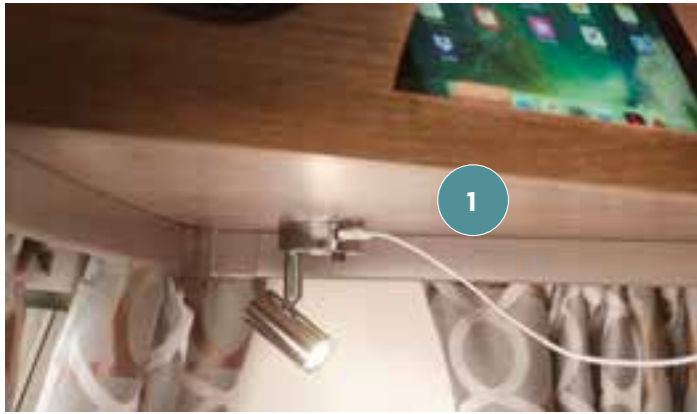
MODEL | BRINDISI

3

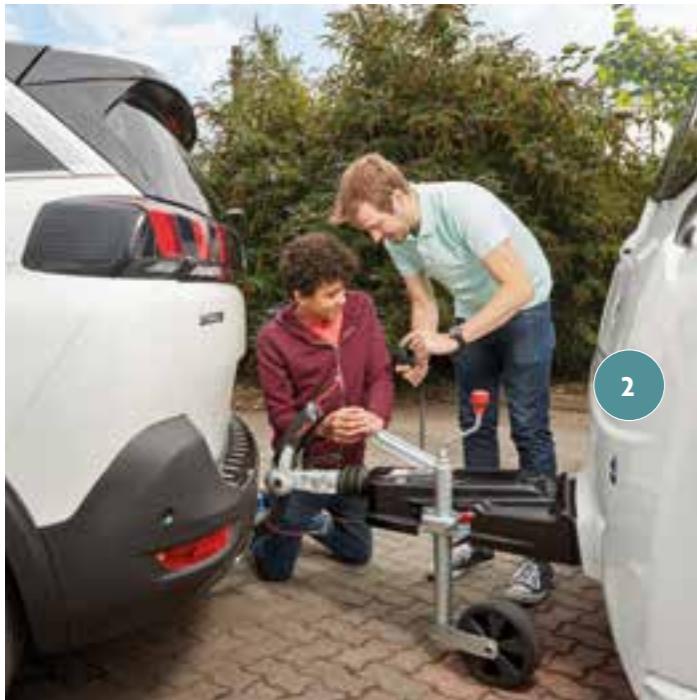
4

Go to: www.baileyofofbristol.co.uk

360°
VIEW



1



2



MODEL | MESSINA

3

4

Go to: www.baileyofbristol.co.uk

360°
VIEW



MODEL | PALERMO



MODEL | PALERMO

5

6

7

- 1 **NEW** USB sockets in directional spotlights
- 2 AL-KO ATC Trailer control system
- 3 Opening vertical skylight
- 4 Standard 'Kempton' upholstery
- 5 **NEW** LED over locker lighting
- 6 **NEW** central U-shaped dinette area with sliding table (model specific)
- 7 **NEW** 'Soft Truffle' split section loose fit drop in carpets



MODEL | MESSINA

1

- 1 Through-boot easy access large exterior storage locker (model specific)
- 2 Optional 'Archway' upholstery
- 3 Branded 800 watt microwave oven
- 4 Dometic 145-litre tower refrigerator with electronic ignition (model specific)
- 5 Truma combi heating system (Combi 4 single axles and Combi 6 twin axles)
- 6 Truma iNet system (cost option)
- 7 **NEW** kitchen and washroom 'Nordic Stone' worktop laminate
- 8 Drop down hob cover
- 9 Truma 100 watt solar panel
- 10 **NEW** 'Eucalyptus' Italian design overhead locker doors with 'Brushed Champagne' contrasting stripe
- 11 Bespoke caravan bedding sets to co-ordinate with caravan soft furnishings (cost option)



MODEL | BRINDISI

3

4

2



5

6



7

8



9



MODEL | RIMINI

10

11

EXTERIOR FEATURES

EXTERNAL FEATURES

- 'Polar White' bodyshell
- Aero-dynamic & aesthetically enhanced rear bodyshell profile
- AL-KO one-piece galvanised steel chassis, braking system and running gear
- **NEW** flush-fit single piece front impact resistant bumper with integral grab handles
- **NEW** flush-fit single piece rear impact resistant bumper with integral grab handles
- Step up a-frame fairing
- **NEW** design 'Silver' 15" TUV tested alloy wheels (single-axle only)
- **NEW** design 'Silver' 14" TUV tested alloy wheels (twin-axle only)
- Hartal GRP skin two part large aperture exterior door with window, blind, waste bin and dustpan & brush
- Exterior door drip tray
- LED awning light with integral water management system
- Double glazed Polyplastic opening vertical skylight
- Aerodynamically profiled double glazed Polyplastic opening windows throughout
- Modern look Bailey branded front window with darker screen print
- Large kitchen window providing enhanced light in the centre of the caravan
- Midi and mini Heki roof lights located throughout the main habitation area
- Centrally mounted easy-access gas locker for enhanced stability and reduced noseweight
- Exterior 230v socket and 230v power inlet for mains hook-up
- **NEW** Truma gas BBQ point
- Status 570 telescopic directional digital television aerial
- **NEW** through-boot easy access large exterior storage locker (model specific)
- Easy access exterior storage locker (model specific)
- **NEW** graphics scheme

A ALU-TECH BODYSHELL

- Structural interlocking aluminium extrusion framework with no external fixing points and concealed awning channels on both sides
- Five part fully bonded exterior panel assembly system
- Upper body panels manufactured using superior bead application laminating technology for a stronger more consistent bond
- Upper body panels built using a timber free construction, incorporating a composite plastic internal skeleton, a high density polystyrene insulation and a GRP inner wall lining
- Upper body panels cloaked in a single sheet impact resistant GRP outer skin for extra durability
- Supplied with a 6-year transferable bodyshell integrity warranty and a 3-year transferable manufacturers components warranty*
- 4-year transferable extension to bodyshell integrity warranty (making 10 years in total) and/or 3-year transferable extension to manufacturers warranty (making 6 years in total) available as cost options*
- EN-1645 Grade III classification for heating and thermal insulation (cold chamber tested)
- European Whole Vehicle Type Approved to be European Standard compliant and certified by the National Caravan Council

*Terms & Conditions apply. Please visit the [Vehicle Warranty Section](#) for more information.



SAFETY AND SECURITY

- AL-KO ATC Trailer Control System
- AL-KO AKS 3004 Stabiliser
- **NEW** AL-KO Secure receiver for optional AL-KO Secure portable wheel lock
- WSL Individually Laser Balanced wheels fitted with 'Security' tyres and anti-tamper WSL Safety Bolts
- Wind down floor mounted spare wheel carrier and spare wheel (steel spare wheel)
- **NEW** Tracker Retrieve Stolen Vehicle Recovery System (with three months free subscription)
- High security one key operation throughout
- CRiS identity number anti-tamper labels attached to windows and inside gas locker
- Concealed security data chip within caravan construction
- Smoke alarm
- Carbon monoxide alarm

INTERIOR FEATURES

FURNITURE & FURNISHINGS

- **NEW** Bailey 'Eucalyptus' furniture finish
- **NEW** G-shaped front lounge with sliding front dinette table (model specific)
- **NEW** central U-shaped dinette area with sliding table (model specific)
- Wider 2-drawer chest of drawers with slide out occasional table and soft close drawers (model specific)
- Angled backrest and seat ventilation boards for enhanced heating efficiency
- Slatted front bed make-up system on easy-glide track
- Lightweight freestanding table with dedicated storage
- **NEW** design vertical skylight surround with integral task lighting

- **NEW** dual finish 'Eucalyptus' Italian design overhead locker doors with 'Brushed Champagne' contrasting stripe
- Aircraft style overhead locker system with split level storage and domestic style metal hinges and chrome handles
- Structural locker dividers with greater load bearing capacity
- **NEW** over locker LED lighting
- Premium quality chrome finish fixtures and fittings
- **NEW** 'Nordic Stone' finish kitchen and washroom worktop laminate
- **NEW** drop down hob cover worktop laminate in matching 'Nordic Stone' finish
- Integral dedicated cutlery tray
- Solid domestic style washroom door with domestic metal handle
- Large fully lined square shower cubicle with bi-fold door
- Internal grab handle for ease of access in and out of the caravan
- Fixed double beds with aluminium frames and gas strut assisted opening mechanism (model specific)
- Integrated curtain pelmet
- Domestic style sofa seating featuring premium quality fabrics and sprung seat bases for enhanced comfort
- Domestic style backrests for enhanced comfort
- **NEW** standard 'Kempton' soft furnishings with co-ordinated lined curtains, bolster cushions, two large square scatter cushions and two rectangular scatter cushions
- **NEW** optional 'Archway' soft furnishings with co-ordinated lined curtains, bolster cushions, two large square scatter cushions and two rectangular scatter cushions
- Textured finish durable floor vinyl
- **NEW** 'Soft Truffle' split section loose fit drop in carpets
- Entrance door mat

SPACE

- Internal headroom of 1.96m (6'5") throughout the length of the caravan
- Body width of 2.45m (8'0")

*Terms and conditions apply. Please visit the Vehicle Warranty Section for more information. Full specification and warranty information details can be found by visiting: www.baileyofbristol.co.uk

SERVICES

ELECTRICAL SYSTEM

- 100 watt Truma solar panel
- 230v power supply with up to six Piano Black design interior sockets
- TV station with 230v, 12v and up to two aerial sockets
- 12v internal lighting system including LED down-lighters and directional spotlights
- **NEW** up to 4x USB sockets in directional spotlights
- 12v shower cubicle lighting
- Centrally located under floor leisure battery storage locker
- Centrally located electrical control panel
- Domestic style consumer unit with dedicated access door (model specific)
- Switch mode battery charger with 20 amps output
- RCD/MCB protection for mains electric system
- Pre-wiring for motor mover (retailer fit)
- 25 metre mains connecting lead

WATER & GAS SYSTEM

- Truma combi 4 heating system with combined water and room heating with dual fuel 4kw gas or 1.8kw electric power sources (single-axle only)
- Truma combi 6 heating system with combined water and room heating with dual fuel 6kw gas or 1.8kw electric power sources (twin-axles only)
- User friendly digital control panel with adjustable fan and water boost functions
- Dual fuel Propane/Butane 30mb gas regulator mounted in gas locker compartment
- Truma high flow submersible pump
- Inboard rigid pipe waste plumbing system
- Exclusive Thetford C-260 cassette toilet with remote header tank (model specific)
- Thetford C-260 cassette toilet with integrated header tank (model specific)

- Inboard shower unit with ceramic ball mixer tap and Ecocamel shower head

GENERAL EQUIPMENT

- Remis pleated flyscreen and blinds to principal windows
- Remis 2-part pleated flyscreen and blind to vertical skylight
- Hartal pleated full length flyscreen to exterior door
- Branded Radio/CD/MP3 player with iPod / MP3 player connection point
- Branded dual cone stereo speakers for superior sound quality

KITCHEN EQUIPMENT

- Dometic 103 litre refrigerator & 12 litre freezer with electronic ignition (single-axle only)
- Dometic 145 litre tower refrigerator & 28 litre freezer with electronic ignition (twin-axles only)
- Thetford Caprice combined oven, grill and hob with electronic ignition and flame failure device
- Thetford dual-fuel hob with electric hotplate and 3 gas burners
- Branded 800 watt microwave oven
- **NEW** stainless steel kitchen sink with swan-neck mixer tap, washing up bowl and drainer

OPTIONAL EXTRAS

- Truma iNet system (retailer fit)
- **NEW** optional 'Archway' soft furnishings
- Bespoke caravan bedding sets to co-ordinate with caravan soft furnishings

	RIMINI	BRINDISI	BOLOGNA	MESSINA	TURIN	PALERMO
Berths	↑↑↑↑	↑↑↑↑	↑↑↑↑	↑↑↑↑	↑↑↑↑↑	↑↑↑↑↑
Internal Length	5.904m/19'4"	5.904m/19'4"	6.334m/20'9"	6.334m/20'9"	6.334m/20'9"	6.334m/20'9"
Shipping Length	7.381m/24'3"	7.381m/24'3"	7.863m/25'10"	7.863m/25'10"	7.863m/25'10"	7.863m/25'10"
Overall Width	2.450m/8'0"	2.450m/8'0"	2.450m/8'0"	2.450m/8'0"	2.450m/8'0"	2.450m/8'0"
Overall Height	2.583m/8'6"	2.583m/8'6"	2.583m/8'6"	2.583m/8'6"	2.583m/8'6"	2.583m/8'6"
Internal Headroom	1.960m/6'5"	1.960m/6'5"	1.960m/6'5"	1.960m/6'5"	1.960m/6'5"	1.960m/6'5"
Awning Size	1033cm	1030cm	1077cm	1077cm	1077cm	1075cm
Tyre Sizes	195/70R15	195/70R15	185/65R14	185/65R14	185/65R14	185/65R14
MTPLM	1509kg	1499kg	1640kg	1669kg	1686kg	1692kg
MRO	1360kg	1350kg	1481kg	1510kg	1507kg	1513kg
Total User Payload	149kg	149kg	159kg	159kg	179kg	179kg
Bed Sizes						
Front Double	7'3" x 4'0"	7'3" x 4'0"	7'3" x 4'3"	7'3" x 4'3"	7'1" x 4'9"	7'1" x 4'9"
Front N/S Single	-	-	-	-	62" x 2'1"	62" x 2'1"
Front O/S Single	-	-	-	-	62" x 2'1"	62" x 2'1"
Mid O/S Double	-	-	-	-	66" x 3'8"	66" x 3'8"
Rear N/S Fixed Single	6'2" x 2'6"	-	-	-	-	-
Rear O/S Fixed Single	6'2" x 2'6"	-	-	-	-	-
Rear N/S Fixed Bunks	-	-	-	-	-	6'1" x 2'3"
Rear Fixed Double	-	6'3" x 4'7"	6'3" x 4'7"	6'1" x 4'7"	6'1" x 4'7"	-

A tolerance in the MRO has been allowed for in the calculations of Payload Margins. The awning length measurement shown is to be interpreted as a guide only and an enquiry should be made to individual awning manufacturers as to the correct size. All Single Axle in 1600 kg chassis. All Twin Axle in 1800 kg chassis. Visit www.baileyofofbristol.co.uk for Pegasus Grande metric bed sizes, (bed sizes are measured at the widest point of the bed.)

COMPARE OUR CARAVANS ONLINE

